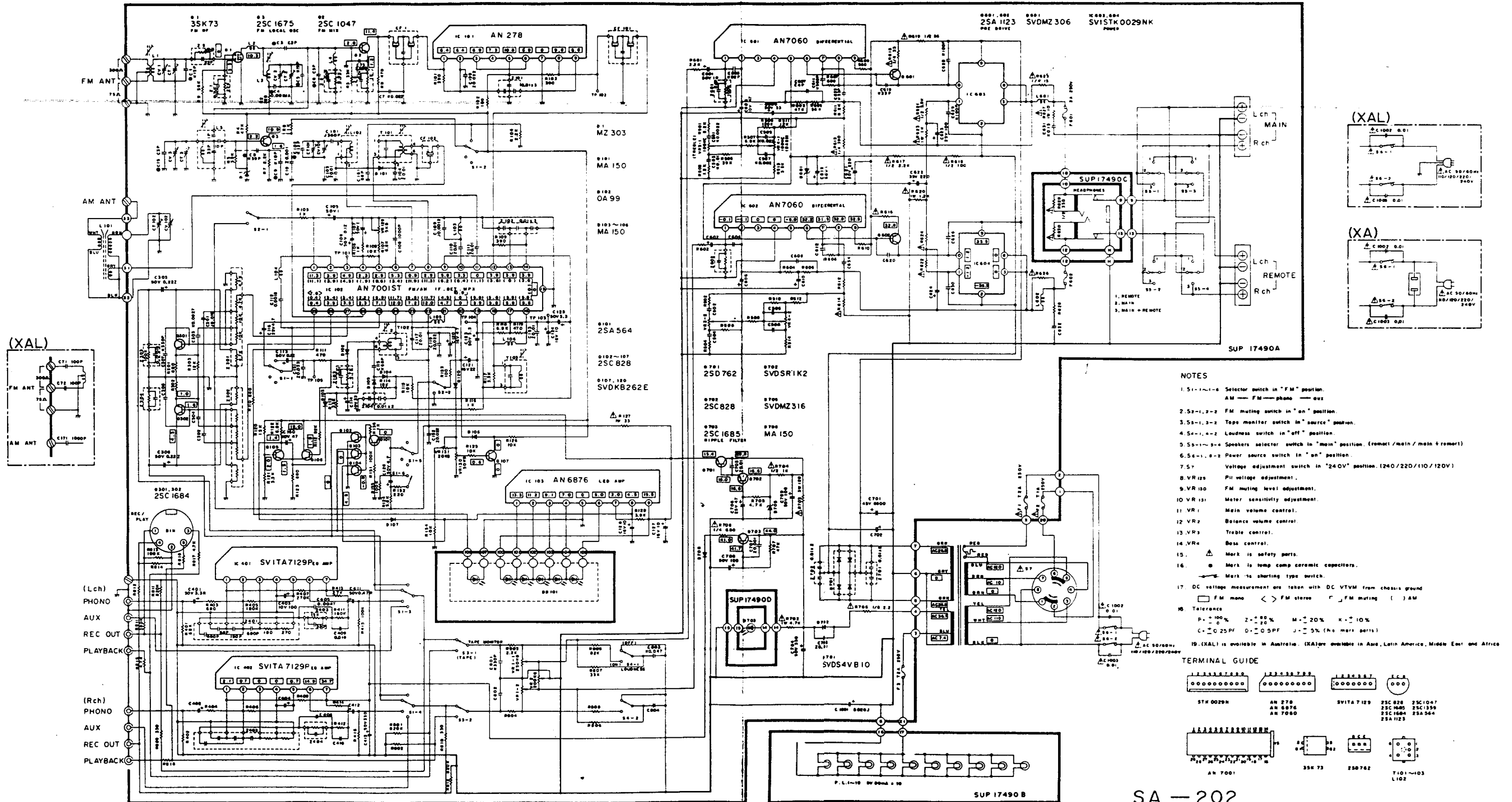
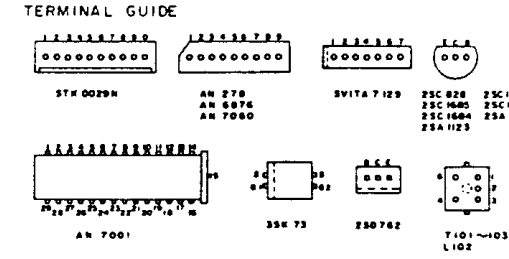


Schematic Diagram... Model SA-202 (This schematic diagram may be modified at any time with the development of new technology.)



- NOTES**
1. S1-1, 2-2 Selector switch in "FM" position.
AM — FM — phono — aux
 2. S2-1, 2-2 FM muting switch in "on" position.
 3. S3-1, 2-2 Tape monitor switch in "source" position.
 4. S4-1, 2-2 Loudness switch in "off" position.
 5. S5-1, 2-3 Speakers selector switch in "main" position. (remote/main/main + remote)
 6. S6-1, 2-2 Power source switch in "on" position.
 7. S7 Voltage adjustment switch in "240V" position. (240/220/110/120V)
 8. VR125 Pilot voltage adjustment.
 9. VR130 FM muting level adjustment.
 10. VR131 Meter sensitivity adjustment.
 11. VR1 Main volume control.
 12. VR2 Balance volume control.
 13. VR3 Treble control.
 14. VR4 Bass control.
 15. ⚠ Mark is safety parts.
 16. Ⓜ Mark is temp comp ceramic capacitors.
⚡ Mark is shorting type switch.
 17. DC voltage measurement are taken with DC VTVM from chassis ground.
□ FM mono < > FM stereo ◻ FM muting () AM
 18. Tolerance
P = 100% Z = 50% M = 20% K = 10%
C = 0.25PF 0 = 0.5PF J = 5% (No mark parts)
 19. (XAL) is available in Australia. (XA) are available in Asia, Latin America, Middle East and Africa



SA — 202
202K